

The logo features a stylized sun with yellow rays at the top. Below the sun are two grey human figures, one slightly behind the other, both with arms raised in a gesture of celebration or achievement. At the bottom of the logo are three blue, leaf-like shapes that fan outwards.

State - Assam

SATHEE

Teachers Name	Participated Students	Asked Question by
<ul style="list-style-type: none">• Pratyusha• Prateek• Tabmoy Mandal• Biswajit Sutradhar	79	<ul style="list-style-type: none">• Snehasis Bhowmick• Subojit Ghosh

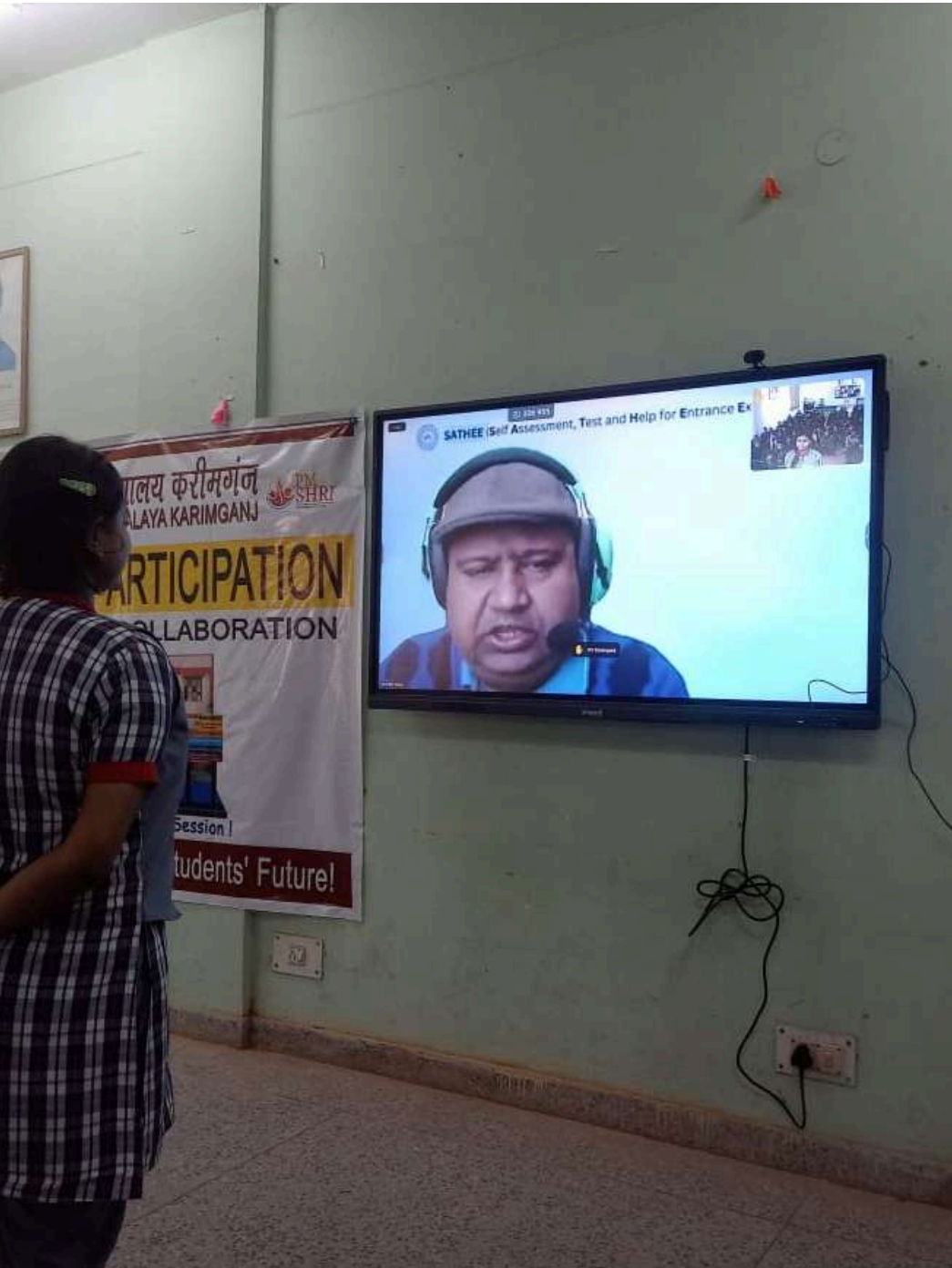


Teachers Name	Participated Students
<ul style="list-style-type: none">Rinju Mani Kalita	35



School Name: KV Karimganj (Assam)

Teachers Name	Participated Students	Asked Question by
<ul style="list-style-type: none">Mahender Singh	49	<ul style="list-style-type: none">SunitaSwati garg

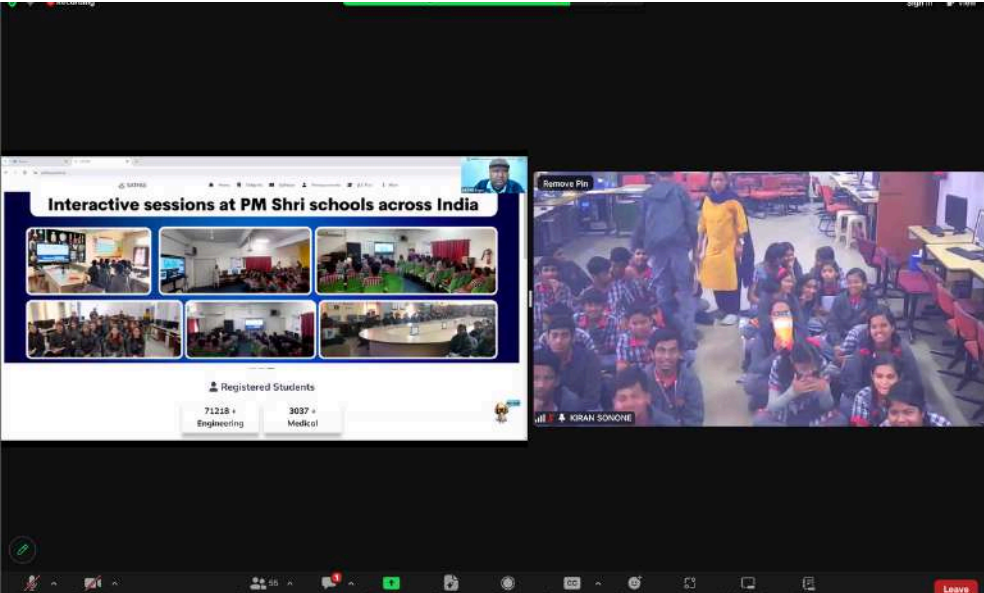


School Name: KV Kumbhirgram (Assam)

Teachers Name	Participated Students	Asked Question by
<ul style="list-style-type: none">Mr. Ashutosh MishraMs. Bornia Majumder	50	<ul style="list-style-type: none">Dabadeep Sharma



Teachers Name	Participated Students
<ul style="list-style-type: none">• Mr. Sourav Roy• Mr. Prakash Das• Mr. Prasenjit Reang	59



School Name: KV Dinjan (Assam)

Teachers Name	Participated Students
<ul style="list-style-type: none">No Information	No Information

